

Empowering Every Ability

FISCAL YEAR 2023

Ability



Table of Contents

Letter from the CEO	1
Mission and Services	2
Program Impact	4
Services and Programs	6
Empowering Growth and Community through Adult Day Programs	8
Empowering Personal Growth in Children and Adults	10
Empowering through Employment Services	12
Empowering Campers' Abilities	13
Financials	14
Events & Committees	14
Empowering Legacy Members	16
Empowering Abilities in the Workplace	17
Donor Lists	18-20
Empowering Ways to Give and Support AbilityFirst	21



Empowering Every Ability

Dear AbilityFirst Friends,

Since AbilityFirst's inception in 1926 to support children affected by polio, we continue to evolve to address the growing needs of individuals with disabilities across Southern California. Through our person-centered approach, we prioritize our participants while focusing on capabilities and expanding possibilities so that they can reach their full potential. It is with this spirit that I begin my tenure as AbilityFirst's new President and CEO and work to build upon our 98-year history and enduring impact as we move toward our bright future. We are committed to advancing our mission, vision, and legacy of fostering an inclusive community where all are valued.

The theme of this year's annual report is **"Empowering Every Ability"** as it highlights the incredible transformation that unfolds when an individual is empowered to discover and share their strengths with the world around them. In these pages, you will meet some of our inspiring participants: Chris Valle, who has become an incredible role model to his peers; Lance Gross, whose quiet, observant demeanor makes a big impact and models how to show up for others in life; longtime participant, Maria Warren, and 8-year-old Michael Barros, who have been supported to share their voices with others; Julianna Feser, who has participated in several Supported Employment program opportunities and brings joy to everyone she meets; and Deborah Estrada who consistently shows up to every virtual program offered at Camp Paivika @Home. The growth that each of our participants experience is a catalyst that furthers our commitment to empowering every ability, ensuring that each person can reach their goals and experience the life they envision for themselves.

We are not alone in our unwavering dedication to our mission. With support from our generous donors, foundations, corporate partners, volunteers, and passionate team members, we collectively uplift the voices and lives of the individuals and families we serve. We are grateful for your continued partnership, and we will continue to empower our participants to experience lives full of opportunities.

Sincerely,



Sergio Rizzo-Fontanesi, Ph.D., LCSW
AbilityFirst President and CEO



2024 Board of Directors

Kathryn Sanders Platnick, *Chair*

Willan Johnson, *Vice Chair*

Randy Repp, *Treasurer*

Will Craig, *Secretary*

Mary Spellman, *Member-at-Large*

Luther Beegle

Candis Bowles

Joseph Brumfield

Ken Chawkins

Malcolm Coronel

Mike Dokmanovich

Richard R. Frank

Lauren Hom

John Kelly

Anita Lawler

Wendy Lees

Carol Llewellyn

Francisco Navarro, MD

Liana Pogosyan

David Saeta

Nevin Stanton-Trehan

Harlan Thompson

Executive Leadership

Sergio Rizzo-Fontanesi, Ph.D., LCSW
President and Chief Executive Officer

Keri Castañeda
Chief Operating Officer

Kashif Khan
Chief Financial Officer

Courtney Jurado
Chief Development Officer

Mission

AbilityFirst™ provides a variety of programs designed to help people with disabilities achieve their personal best throughout their lives. We do this by creating targeted programming to help an individual successfully transition from childhood to adult life.

Vision

At AbilityFirst, our vision is a society that values each individual and provides the opportunity for all people to lead full and productive lives.

Values

**Trust - Belonging -
Personal Best**

AbilityFirst stands for and alongside people with developmental disabilities and their families. We create a welcoming environment where everyone feels they belong and are valued. Our first consideration is always for the well-being of our participants and – through the mutual trust that we share – each person is supported to achieve his or her personal best.

Diversity, Equity, and Inclusion Strategy

AbilityFirst will ensure access to our programs by focusing on the needs of individuals who face barriers to service. In particular, we will assess the barriers to access for those who are low income, come from diverse cultures, and speak languages other than English and seek to provide solutions to address those barriers.



Administration

789 N. Fair Oaks Ave.
Pasadena, CA 91103
Tel: 626-396-1010
Fax: 626-396-1021
info@abilityfirst.org

On-site Services: Administration,
PossAbility Adult Day Program,
Supported Employment,
Manufacturing

Claremont Center

480 S. Indian Hill Blvd.
Claremont, CA 91711
Tel: 909-621-4727
Fax: 909-624-8388
afclaremont@abilityfirst.org

On-site Services: After School
Program, Employment Services,
PossAbility Adult Community
Integration Program

Facility License: #191501798

Camp Paivika

Mailing Address:
PO Box 3367
Crestline, CA 92325



Camp Address:
600 Playground Dr.
Crestline, CA 92322
Tel: 909-338-1102
Fax: 909-338-2502
campaivika@abilityfirst.org

On-site Services: Overnight
Summer Camp, Overnight Winter/
Spring Camp Experiences,
Mom's Retreat, Facility Rentals



East Los Angeles Center

154 N. Gage Ave.
Los Angeles, CA 90063
Tel: 323-268-8178
Fax: 323-268-2359
afeastla@abilityfirst.org

On-site Services: ExploreAbility
Adult Day Program

Facility License: #198603651

Joan & Harry A. Mier Center

8090 Crenshaw Blvd.
Inglewood, CA 90305
Tel: 323-753-3101
Fax: 323-753-5472
afinglewood@abilityfirst.org

On-site Services: ExploreAbility
Adult Day Program, Adult After
Care Program, Community Aquatics

Facility License: #191601509

Lawrence L. Frank Center

201 S. Kinneloa Ave.
Pasadena, CA 91107
Tel: 626-449-5661
Fax: 626-449-1519
afpasadena@abilityfirst.org

On-site Services: ExploreAbility
Adult Day Program, After School
Program, College to Career
Program

Facility Licenses: #191223376,
#198602059

Employment Services Long Beach

3770 E. Willow St.
Long Beach, CA 90815
Tel: 562-426-6161
Fax: 562-426-6148
employmentservices@abilityfirst.org

On-site Services: Employment
Services

Long Beach Center

Long Beach, CA 90815
Tel: 562-426-6161
Fax: 562-426-6148
aflongbeach@abilityfirst.org

On-site Services: ExploreAbility
Adult Day Program, After School
Program, Community Aquatics,
Supported Employment

Facility Licenses: #191600097,
#191600444

PossAbility Adult Community Integration Program Office Los Angeles

3751 S. Hill St., Suite 217
Los Angeles, CA 90007
employmentservices@abilityfirst.org

Program Impact



2023 Highlights

Program Accomplishments

Total Individuals Served in...

CORE PROGRAMS: 1,465
ALL PROGRAMS: 2,161

Hours of Service:
323,473



After School Program:	58,177
Adult Day and Community Integration Services:	201,303
Job Coaching:	27,979
College to Career:	36,014

Camp Paivika Summer

Campers attended:



261



Companions and friends attending with campers:

95

Volunteering

Volunteer Activities at Community Nonprofit Sites by Participants

Activity hours: **7,195**

Locations: **47**

Individual Volunteers: **212**



Participant and Family Survey Results*



100%

of families stated their loved ones are supported in making choices.

100%

of families stated they are satisfied with the services offered to their loved ones.

99%

of participants stated they like coming to and have fun at the program.

97%

adult participants stated they have opportunities to make choices about their day.

96%

of participants have made a friend at AbilityFirst.

*142 survey respondents

Services and Programs

Social Recreation programs encompass a variety of interests while offering a fun atmosphere for adults. Activities include typical weekend activities such as parties and dances, going out to dinner and a show, gardening, swimming and the world-famous Club 626 at the Lawrence L. Frank Center in Pasadena.

ExploreAbility is an adult day and community integration program. The goals of ExploreAbility are to help adults explore and identify what is important to them, develop the skills necessary to achieve their goals, and be involved in their communities through volunteering and community activities.

PossAbility is intended for adults who want to enhance their skills and independence and be active members of their communities. Individuals in the program are empowered to set and pursue personal goals with an emphasis on employment readiness and increased community connections, including volunteering.

Employment Services offer a variety of approaches to provide adults with disabilities the level of support they need to find and retain employment in competitive job markets in their communities, including job placement and the job coaching, paid internships, and work experience programs for youth. By partnering with local businesses, we ensure that job development aligns with the



specific needs of employers while leveraging the strengths and interests of individuals. AbilityFirst is proud to also provide employment support to Project SEARCH interns. The Project SEARCH model involves an extensive period of training and career exploration, innovative adaptations, long-term job coaching, and continuous feedback from teachers, job coaches, and employers. The cornerstone of Project SEARCH is a total workplace immersion with a host business and related agencies.

College to Career is a community-based program for students who want to go to college and gain the skills, training, and education to achieve their academic and career goals. The multi-year program begins with a self-discovery and community exploration component to help students identify and develop a plan to achieve goals. College to Career is a traditional community college education program that offers services and supports to

help students succeed. Upon completion of the academic component, as the final stage of the program individuals may transition to community jobs, internships, or volunteer programs as they launch their career paths.

After school and **summer programs** provide a nurturing environment for school-age youth. Our well-trained and caring staff provide opportunities for new experiences that encourage socialization, exploration, and choice. Participants enjoy an enriching program that also provides needed personal care (including feeding, changing, transferring, etc.) while supporting personal growth and discovery.



The Community **Aquatics** program offers warm water exercise classes that is ideal for promoting joint flexibility, range of motion, and muscle tone. Group and private swim lessons, as well as open swim times for the entire community, are also offered.



Located in the beautiful San Bernardino National Forest, AbilityFirst **Camp Paivika** offers overnight summer programs for children and adults with disabilities. These programs provide a traditional camp experience with a high level of support and an emphasis on personal discovery. One of the first fully accessible camps in the United States, Camp Paivika has helped thousands of children and adults with disabilities make friends, try new activities, and become more confident and independent. As campers enjoy their Camp Paivika experience, families and caregivers can take a break from the rigors and challenges of providing 24/7 care, knowing that their loved ones are safe, well-supported, and having fun.

**To learn more
about these programs
and services, visit
abilityfirst.org.**



Empowering Growth and Community



through Adult Day Programs

Chris Valle, 30, greets everyone in the morning as they walk into the Long Beach Center. Cheers and applause fill the room. A role model, Chris has demonstrated significant personal growth and has taken on various responsibilities around the center, such as taking roll of participants in attendance during the morning session. His dedication and initiative have made him an integral part of our community.

Along with other participants, Chris is empowered with support from staff at our ExploreAbility Adult Day Programs that help adults explore and identify what is important to them, develop the skills necessary to achieve their goals, and be involved in their communities through volunteering and community activities. Our enhanced programs are person-centered, flexible, and responsive to individual goals, needs, preferences, and interests.

“My best skill is karate,” said Chris, who enjoys going to the gym to exercise regularly and maintain his personal fitness goals. With another goal of eating healthy, Chris has learned to cook nutritious food in the center’s teaching kitchen.

Over the past year, Chris has been eager to increase his responsibilities. He now assists with multiple tasks, such as updating the program schedules when participants switch groups, cleaning up after snack time, sweeping floors, and cleaning tables, ensuring the smooth transition of daily activities. Additionally, Chris has embraced a leadership role by greeting family members and care providers. He announces their arrival over the walkie-talkie and enjoys communicating important program information with the staff.

Beyond these duties, Chris has become an ambassador for our center. He leads tours for potential staff, Regional Center service coordinators, board members, and prospective participants, showcasing our facility and the inclusive environment we foster. His enthusiasm and commitment have empowered other participants like Lance Gross to take on more active roles within the program.

Lance Gross, 34, has been involved with the Social Recreation program over the past year, leading to tremendous personal growth. Lance has become significantly more engaged, including learning new karate moves from Chris. Previously, Lance preferred to sit alone during lunch and other activities. Now, he actively seeks out areas where people are gathered to join in for meals and activities, enjoying the company and interactions.

A fan of the Los Angeles Angels, Lance’s social skills have blossomed, and he can often be seen joking around with his friends in the program and enjoying their reactions. He has also increased his communication skills by answering questions directly rather than repeating them. Lance has even become more adventurous with food, trying new dishes, and expressing his preferences. His generosity has shone through on more than one occasion when he has offered to pay for a friend’s purchase when they didn’t have enough money. Having been a participant of our programs for 20 years, Lance models many ways to show up in life with and for others.

Serving as mentors to their peers, Chris and Lance’s journeys exemplify the impact of our ExploreAbility Adult Day Programs by empowering every individual to achieve their fullest potential.

Empowering Personal Growth



in Children and Adults

Bright-eyed and composed, **Maria Warren, 23**, walks into the Long Beach Center, puts her personal items away, and grabs her morning snack before settling in at the welcome table. Having transitioned from the youth program to the ExploreAbility Adult Day Program, Maria has continued to experience growth.

Maria actively participates in activities, particularly enjoying making resin items. She takes the lead in preparing for these activities and assists with cleanup afterward. Maria is always ready to help other participants, including pushing their wheelchairs to the table, if needed. Additionally, Maria initiates roll call for her afternoon session, showing her leadership and communication skills. Over time, she has become more vocal, communicating with staff and other participants.

Through a variety of center-based activities and field trips, AbilityFirst helps participants achieve their personal best in several key areas, such as life skills, communication, socialization, and healthy living. Specifically, Maria said one of her goals is “to eat healthy food.” She has made many personal steps towards this goal and even told staff, “I dream about the five food groups!”

Like Maria, **Michael Barros, 8**, has also experienced significant growth. In the short period since becoming a participant in our After School Program, Michael has boosted his confidence and now actively communicates and interacts with others in the

program. Amazed at the transformation they have seen, Michael’s parents, Alex and Rocio Barros, shared how Michael is willing to take risks like when he volunteered to read in front of the class.

“Within a month, you can see changes in his behavior,” said Alex. “He has emotional control and has reduced his self-inflicting behavior and is not as impulsive.” Rocio also added that before attending AbilityFirst, Michael would stay in a corner while they would decorate for the holidays. “This past year, Michael, alongside his sister, was placing ornaments on the Christmas tree.”

Amazement and relief are the emotions Alex and Rocio describe as they recall how they struggled to get Michael in the car for school. “We do everything now; we can go out. He opens the door and puts on his seatbelt.” They attribute AbilityFirst with helping Michael learn this skill.

Today, Michael can regulate his emotions, listen to instructions, and explore interests like music. He is learning to play the flute and using his strong windpipes to use his voice. Staff say that his best ability is advocating for himself, what he needs, and expressing his feelings.

Maria and Michael are a testament to the person-centered approach we have in our programs and how true empowerment brings out the best in each person’s life.

Empowering Individuals through Supported Employment



A participant in our Supported Employment program, 33-year-old **Julianna Feser**'s workforce journey highlights how empowering individuals to explore diverse work settings and gain workforce readiness skills helps them achieve greater independence and build confidence.

Julianna began her path to employment through our Project SEARCH internship at City of Hope. During her internship, she gained valuable experience working in various roles, including giving patients visitor tags, navigating the doctor's office, and performing tasks in the cafeteria such as wiping tables, cleaning floors, mopping, and ensuring chairs were properly arranged. These experiences not only equipped her with essential job skills but also boosted her confidence and independence.

Upon graduating from Project SEARCH, Julianna received continued support from AbilityFirst. In fact, the skills she learned at City of Hope helped her secure a job at Chuck E. Cheese. In her new role, she assists with greeting, stamping children's hands, maintaining the front desk, and ensuring a clean and welcoming environment by wiping down tables, benches, and sweeping floors.

"I'm so happy at Chuck E. Cheese. It's a happy place with a lot of children and families, and they're having

a good time, and it makes me happy," exclaimed Julianna, adding "I love it!"



Julianna's mother, Joan Feser, is steadfast about teaching her adult children, who have developmental disabilities, how to navigate life on their own. At home, she reinforces the skills her adult children have learned at AbilityFirst. One time she asked her nephew to be at home while she went away on a trip, the first time she ever left her adult children alone with another person. "I came home to an immaculate house. It was perfect, and they did all the laundry. They're just amazing," Joan said. "They're my shining stars, and I was really proud that they were able to do it."

With collaboration from our job developers and our job coaches, our programs tailor the workforce needs of our participants and demonstrate how individuals with disabilities can achieve meaningful and sustainable employment. Julianna's story is just one example of the many successes we celebrate in our mission to empower every ability.

Campers' Abilities



In addition to being an author, **Deborah Estrada**, 35, has been a regular camper, attending AbilityFirst Camp Paivika since 2015, which gives her a sense of belonging and community. During the COVID-19 pandemic, the 2020 in-person summer camp program was canceled for safety purposes. In response, we launched Camp Paivika @Home, an online program that allows campers to stay connected and engaged. This virtual program continues today and includes activities such as “Wheel of Fun,” Just Dance, art, themed exercise days, and more.

Deborah, who has cerebral palsy, loves the Camp Paivika @Home experience and has attended every session, from reading books together to attending monthly movie nights and show-and-tell events. Camp staff realize that these experiences are really important to her and her family. The Camp Paivika @Home program has been an essential part of Deborah's life, providing her with the engagement and connection she gets during summer camp and in the offseason.



“I continue to participate in Camp Paivika because I absolutely love it,” Deborah writes using her adaptive apparatus via a Zoom interview.

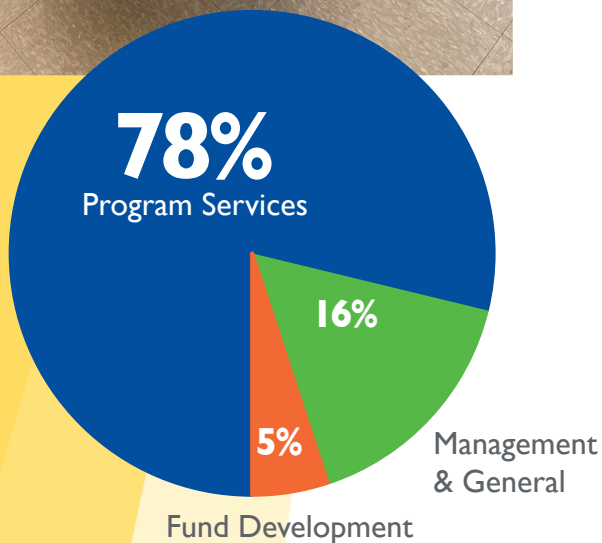
Not only does she love the camping program, but she also has a penchant for writing, having authored two children's books. She also prides herself in being the “best pet owner to my pets,” and soon, she'll be gracing the commencement stage at Rio Hondo College, earning two Associate of Arts degrees in child development and early childhood education. Her participation in Camp Paivika gives her balance.

Like thousands of others who have made friends, tried new activities, and become more confident and independent throughout Camp Paivika's 76 years of service, Deborah exemplifies the impact camp and supportive staff make that extends far beyond a camper's time at Camp Paivika.



2023 Financials

January 1 - December 31



REVENUE AND SUPPORT

(\$ in thousands)

Program Revenue

Community Centers	\$ 7,196
Business Services	249
Housing Services	350
Camping Services	124
Supported Employment	1,766

Fund Development

General	1,803
Restricted Donations	157
Legacies, Bequests & Trusts	1,291

Other Revenue

Facility & Other Revenue	652
Manufacturing Sales	163
Investment Income/(Loss)	9,468
Change in Value - Trusts	323
Gain/(Loss) on Sale of Asset	31
Employee Retention Credit	3,105

TOTAL REVENUE/SUPPORT \$ 26,678

OPERATING EXPENSES

Program Services \$ 15,278

Support Services

Management & General	\$ 3,278
Fund Development	1,023

TOTAL EXPENSES \$ 19,579

CHANGE IN NET ASSETS \$ 7,099

Events and Committees

In 2023, we hosted three events that brought our supporters together to celebrate our mission and raise awareness of the impact we make with participants, families, and our community. Attendees at the **Food & Wine Festival**, **Rainbows for AbilityFirst**, and **Stroll & Roll** were thrilled to see the tangible impact of their fundraising. The success of these three major events provided a collective sense of hope, reminding us of the power of coming together in person, rain or shine, to raise critical funds for AbilityFirst's programs and services.



**Thank you to
all our Event
Committee
Members!**

FOOD AND WINE FESTIVAL

Anita Lawler, *Chair*

Devon Anderson
Anita Besharat
Steve Brockmeyer
John Nilson
Julietta Perez
Mary Spellman
Harlan Thompson
Melissa Wu

STROLL & ROLL

Willan Johnson, *Chair*

Joseph Brumfield
Malcolm Coronel
Ryan Fridborg
Stephanie McElroy
Elisabeth Seitz
Tom Spinogatti

RAINBOWS FOR ABILITYFIRST

Mary Alice Braly, *Co-Chair*
Julie Taboada, *Co-Chair*

Joan Alderson
Marie Cady-Drummond
Dorla Fair
Arlene Fillius
Caroline Hansen
Roxanne Korzeniowski
Pat Leue
Terri Nikoletich
Mary Pat Sabol
Linda Silver
Jean Stone



The Legacy Society recognizes those visionary and caring individuals who have included AbilityFirst in their estate plans. Their commitment and dedication are shining examples of generosity that will help AbilityFirst continue its efforts to help children and adults living with disabilities realize their full potential! By becoming a member of the AbilityFirst Legacy Society, you can celebrate today the transformations you will help to make possible in the future.

Joan and Tom Alderson
 Mary Alice and Bob Braly
 Raymond G. De Peters
 Joetta Di Bella
 Dr. David E. Billet
 Blanka and Jim Douglass
 Fariester Family
 Barbara Feiga
 Maria French, Ph.D.
 Lori Gangemi
 Gary and Jackey Gray
 James A. Hall
 Herbert L. Harger

Verona Ingrum
 Molly Isenberg
 Marilouise E. Jackson
 Grady Jennings
 Mr. and Mrs. Earl F. Johnson
 John and Jennifer Kelly
 Brian V. Kist
 Jeffrey A. LaBarre
 Harold Leavens
 John Limbeck
 Nell D. Michael
 Bob and Judy Moore
 Michael G. Morris

Roni E. Perlut
 Paul M. Propp
 Reid Robinett Family Trust
 Michael R. Riley
 Michael Reid
 Donna Rogahn
 Charles A. Rohe
 Morris Saul
 Norman Seastedt
 Carol and Greg Teskey
 Frances Tomich
 Lois M. Zelsdorf

Empowering Abilities

in the Workplace

What may have seemed like any other firmwide volunteer event turned into an eye-opening experience into the impact of our work. Will Craig, a Partner at Capital Group, was introduced to AbilityFirst by John Kelly, our former Board of Directors Chair. Soon after, Will joined the board in 2018.

Will's involvement grew deeper as he learned that several employees in his office mailroom were participants in our Supported Employment program. Over time, Will witnessed firsthand how our person-centered coaching model provides individuals the opportunity to focus on their abilities and flourish. He often sees the pride and dependability embodied by our participants as they navigate their daily tasks. Will invites them to lunch every six months to learn what they enjoy about work and what they would like to change.

During the pandemic, Will admired the dedication of our participants who continued their crucial work despite the office closures. Their resilience and commitment were instrumental in setting up safe and functional processes for the entire Capital Group team.

"I'm grateful to Capital Group for maintaining their employment... all of our employment," said Will, reflecting on the pandemic and our participants' contributions during this time. "They had the fortitude and patience to focus on what they can control, set up the processes and systems for the office to function and a thousand people to work collaboratively."

Our partnership with Capital Group exemplifies the powerful impact of our Supported Employment program, which supports our participants and brings inclusion to the workplace environment.

Underscoring the value of our partnership, Will said, "I admire the creativity in finding win-win-win solutions for AbilityFirst, Capital Group, and participants in a way that wasn't obvious to me until I saw it in action. I'm really proud to work at Capital Group and be involved in AbilityFirst, which helps many members of our society who have disabilities and bring their best selves to work as we all aspire to do."



2023 Donors

Guardian

\$250,000 and above

Estate of Selma E. Andrews
David and Marlene Engberg

Partner

\$50,000 - \$249,999

The Ahmanson Foundation
Memorial Trust of Nancy Brower
Estate of Cecile W. Lewis
Myung Yang

Visionary

\$25,000 - \$49,999

Annenberg Foundation
Bank of America
Comerica Bank
William Craig
DEW Foundation
Earl B. and Loraine H. Miller Foundation
H.N. and Frances C. Berger Foundation
John and Jennifer Kelly
L and D Longo Family Foundation
Pasadena Community Foundation
Platinum Equity, LLC
The Rudolph J. and Daphne A. Munzer
Foundation
SourceAmerica
The Thomas and Dorothy Leavey
Foundation
Umpqua Bank

Advocate

\$10,000 - \$24,999

Anonymous
Ralph Bijou
Ruth and Frank Blair
Callie D. McGrath Foundation
The Capital Group, Inc.
The Capital Group Companies
Charitable Foundation
Carrie Estelle Doheny Foundation
Children's Benefit League
CHUBB
Elizabeth Gertrude Bishop Charitable Trust
Ethel Josephine Scantland Foundation
Green Foundation
J.W. and Ida M. Jameson Foundation
Terri and Jerry Kohl
Lawry's Restaurants, Inc.

Looking Beyond
The Pat and Mark Warren Family
Foundation
Ernest and Gunde Posey
Rotary Club of L.A. Foundation
Skechers USA, Inc.
Stephen & Mary Birch Foundation, Inc.
TJX Companies, Inc.
Kevin Tussy

Leader

\$5,000 - \$9,999

Albertsons, Vons, Pavilions Foundation
Joan and Tom Alderson
Mary Alice and Bob Braly
The Arc of California
The Audrey Irmas Foundation for
Social Justice
Be Like Tom, Inc.
Steve and Mary Brockmeyer
Bolton
Chubb Charitable Foundation
Malcolm Coronel
Gloria Deukmejian
The Fletcher Jones Foundation
Richard Frank
Jack Jeong
Willan Johnson and Lakshmi Dastur
JP Morgan Chase & Co.
L.A. Care
Anita and Vince Lawler
Los Angeles County Board of Supervisors
Trust of Jocelyn Gibbons &
Mary Scott Marks
Ellen Mathis
Millennium Housing Corporation
Robert and Judith Moore
Kenneth and Molly Nealson
Netflix
The Personal Branding Group
Harlan and Alison Thompson
SC Fuels
SCAN Health Plan
Norman and Patricia Seastedt
The Simon-Strauss Foundation
Southern California Gas Company
Special Children's League, Inc. -
South Bay Committee
Fred and Denise Speicher
Josephine Tassi

Von Der Ahe Foundation
Keith Wieland and Maureen Daley-Wieland
J. Yang & Family Foundation

Champion

\$2,500 - \$4,999

America Chung Nam, Inc.
Applied Learning Science
Johanna Atienza
Laura Beck
Jake and Megan Beeney
David and Jeanie Belkin
Bess J. Hodges Foundation
Gary and Shirley Best
Beverly Hills Rotary Community
Foundation
Brentwood Originals
Cargill
Sherri Cherman
Columbian Foundation Supporting People
with Intellectual Disabilities
Crimson IT
Gina Cutuli
Del Real Foods
Envision Consulting
Enterprise Holdings
Ryan and Dena Fridborg
Zach Gable
Gallop Cycle Corp
Rochelle Gerson
GGE Foundation
GHJ Insurance
Glidewell Dental
James Hall
Todd Herman
HF Foods Group Inc.
Lauren Hom
IDS Real Estate Group
J's Maids
Marcus Johnson
Richard and Jacqueline Kibler
Wendy Lees and Tom Boyle
Long Beach NonProfit Partnership
Joseph and Jaimee Longo
Longo Toyota-Lexus
Los Angeles Trial Lawyers Charities
LTC
Isis McDonald
Pat McKiernan
David & Margaret Mgrublian

National Charity League, Inc
 Teresa and Chad Nikoietich
 Pasadena Tournament of Roses
 NOVA Medical Products
 Estate of John Jack Pick
 Port of Long Beach
 Randy and Andrea Repp
 ResWell
 Charles Rohe
 Jacqueline Roth
 David and Leslie Saeta
 ScaleNorth Inc.
 Shell Trading (US) Company
 Jaclyn Smith
 Roger Smith
 Theodore and Yonga Smith
 Socius Insurance Services, Inc.
 Patricia Vick
 Vulcan Steel Co.
 Greg and Heba Wood

Ambassador \$1,000 - \$2,499

Ace Gathering, Inc.
 John and Mary Baxter
 Fred and Susan Braddock
 Matthew and Christa Chase
 Stephen and Carol Covington
 Hamlet Baghoumian
 Martha Bellinger
 Estate of Margaret Burgwald
 Judith McNulty Black
 Gary Brown
 Harry Brown
 Jesus Burciaga
 Commonwealth Business Bank (CBB)
 Lori Carmona
 Rafael Chavez-Reyes
 CNA
 Terri Cole
 Thomas Cook
 Crown Facility Solutions, Inc.
 Susan Frank and Jeff DiAngelo
 Mike Dokmanovich
 Fred Douma
 Richard Duquette
 Linda Exley
 Darlene Frazier
 Meghana Frenchman
 Chele Gerson

Robert Gillard
 Nancy Goodhue-McWilliams
 Heather Goodwin
 The Hanover Insurance Group
 Caroline Hansen
 Rebecca Haussling
 Sharon Collins Head
 Jay Henneberry
 Catherine Hoffman
 Gregory Howorth
 Patrick and Angel Hsieh
 IMA Foundation
 Karen Inouye
 IUOE Local 12 Charity Golf
 Committee, Inc.
 Mary Janssen
 Grace Jo
 Anna and Earl Johnson
 Linda Johnson
 Kristi Kahl
 Chris and Lisa Kersting
 Kiwanis Club of Claremont
 Joseph Kochanek
 Roxanne Korzeniowski
 Laemon James Entertainment Corp.
 Keri Castaneda and Alejandro Lara
 Kroger Harold Leavens
 Patricia and Roger Leue
 Liberty Mutual
 Neiman Marcus
 Deloris Mayuga
 Chris McMenomy
 Beverlyn Mendez
 Mineral Miratech
 Mission Driven PR, Inc.
 Sheppard Mullin
 NAEIR
 National Charity League, Inc.
 San Marino Chapter
 John Nilson

Donald and Judy Nollar
 Oak River Insurance Company
 Judy Ostrander
 Kathy Wilson and Keith Peterson
 Kathryn Sanders Platnick and
 Joseph Platnick
 Kelly Privitt
 Fadi Rassam
 NFP Retirement
 Michael Riley
 Christina Romero
 Rotary Club of Claremont
 Patsy Sampson Estate
 Sanctuary Claremont
 Gail Schaper-Gordon and Barry Gordon
 Sheila Scoville
 Elisabeth Seitz and Joe DeRobertis
 Billie and Todd Short
 Lynn Shrum
 The Silk Family Foundation
 Linda Silver
 Mary Spellman
 Rosalie Sussman
 Joseph and Eveline Sykora
 Julia and Henry Taboada
 Carol Tabor
 Len Tang
 Temple Family Foundation
 Rolan Terrazas
 Ken and Pat Thompson
 Linda Toomajian
 Trendnet, Inc.
 Urban Cantina Group
 Daniel Warden
 Miriam Warden
 Carol Warren
 Terry and Julie Wetzel
 Wolfgang Puck Catering
 Frank Yang
 Zurich North America



Visionary

\$500 - \$999

Bonnie Abo
 Agilent Technologies
 Teresa Alarcio
 Robert and Alicia Aldridge
 Wendy Alexander
 James Andrews
 Cynthia Austin
 Lynne Clarke
 Michael and Aileen Barkyoumb
 Dolores Barrios
 Andrew Beauvais
 Leona Benko
 Craig Bergman
 Catherine Bierschbach
 Gary Blasiar
 Joseph Brumfield
 Nicholas Cacarnakis and
 Effie Cornejo-Cacarnakis
 Anthony Cantella
 CG Landscape
 Charlotte and James Cordes
 Susan and Kevin Crook
 Adrian Cyhan
 Jessica Davis
 Karen Deweese
 Brent Diehl
 Tiffany DiMarco
 Kathee Eckstrom
 Edison International
 The Emanuel Bachmann Foundation
 Judith Enright
 Holly Evans
 Dorla Fair
 Fred Fedail
 Thelma Federico
 Barbara Feiga
 David Fortner
 Eva-Marie Fox
 Oscar Franco
 Mark and Jennifer Fedde
 Allison Fuller
 Geoffrey Garth
 David Golder
 Mary Grana
 Lance Gross
 Laura and Gary Gross
 Mark Haderlein
 Health Net
 Todd and Margaret Herman
 Russell and Peggy Hibbs
 Ms. Joette Hnarakis
 Holy Light Baptist Church
 Erik Hovanec
 Jennifer Hronek
 Steven Hronek
 Christa Hughes
 De Ivett
 Jamie Jackson
 Ronald Jackson



Rolf Janssen
 Eugene Johnson
 Lily Mar and Michael Jue
 Courtney Jurado
 Donna Kelley
 Paul Keltner
 Dale Kemner
 Lynn Kornmann
 Myra Kremen
 Richard Krikorian
 Lagerlof, LLF
 Richard LaFontaine
 Jennifer Lahoda
 Theresa Landers
 Tina Lee
 Louise and Quentin Leef
 Robert Liles
 Jae Lim
 Alexander Linna
 Eric Lord
 Stephen & Mei Lo
 Gerard La Londe-Berg
 Robert and Karen Lynn
 Dennis and Georgia Martineau
 Beverly MacLaren
 Alexa Magnotta
 Lisa Mauck
 Renee Mcfadden
 John McIlvery
 Trevor McIntosh
 June McKinney
 Nick and Alexis Minter
 One America
 Our Authors Study Club, Inc.
 Joseph Bohen Patterson
 Philadelphia Indemnity Insurance Company
 Scott and Ann Porter
 John Pratte
 Julie Reid

Retired LBF Association
 Dan Richmond
 Jasmyne Roberts
 Barry Rondinella
 Halaine Rose
 Barbara Rugeley
 Mary Pat Sabol
 Nona Sark
 Peter & Linda Saeta
 Todd and Michelle Schroeder
 Jane Screen
 Thomas Shardlow
 Robby Sharma
 Stephanie Shott
 Earnest Siwicki
 Mark Skidmore
 Larry Stern
 Jacqui Stinson
 April Stover
 Victoria Stratman
 Andrew Teng
 Sheila Thomas
 Kristi Toia
 Megan Traver
 Andrea Van de Kamp
 Susan Vander Schaaf
 Angela Viscomi
 Mary Lou Walker
 Richard Walker Jr.
 Lee and Mary Wanous
 Waterworks Plumbing
 Kerry Welch
 Alisha Wesser
 Jana West
 Nicole West
 Felicia and David Woodson
 James Wylie
 Xiaolei Xu

Donors listed made contributions from January 1 through December 31, 2023. We apologize for any omissions inadvertently made and kindly request if you can reach out to the Development Department, so we can make the correction. Please contact Courtney Jurado, Chief Development Officer, at cjurado@abilityfirst.org or 626-243-4844.

Empowering

Ways to Give and Support AbilityFirst!

Advocate

We invite all who believe in the AbilityFirst mission and vision to stand with us and join our efforts to address important issues and raise concerns that impact our community! We cannot do this important work without you!

Contact: info@abilityfirst.org

Follow Us

Find us on our social media accounts and like, comment and share, so we can continue to build our relationship!

Volunteer

We have year-round volunteer opportunities at locations throughout Greater Los Angeles and summertime volunteer opportunities at beautiful Camp Paivika in the San Bernardino National Forest.

Visit: <https://www.abilityfirst.org/get-involved/volunteer/>



Empower Every Ability!

Make Your Gift Today

We rely on the generous support of individual donors, volunteers and community leaders to support our mission. We have various ways you can contribute to our mission and make an impact on our participants, families, and communities.

Make a tax-deductible contribution



Donate a gift of stock



Acknowledge a special occasion or loved one through tribute or memorial gifts



Add us to your planned giving

Make a matching gift



Donate a vehicle

For more information on how you can support AbilityFirst, please contact the Development Department at 626-243-4844 or email development@abilityfirst.org. Visit <https://www.abilityfirst.org/get-involved/donate/>



Administration

789 N. Fair Oaks Ave.
Pasadena, CA 91103
Tel: 626-396-1010
Fax: 626-396-1021
info@abilityfirst.org



<https://x.com/AbilityFirstLA>



<https://www.facebook.com/AbilityFirstLA>



<https://www.instagram.com/abilityfirstla/>



<https://www.linkedin.com/company/abilityfirst/>



<https://www.youtube.com/user/AbilityFirstLA>